



Product Catalogue



Y-KTF
Round Duct Type
In-Line Fan



Technical Specifications

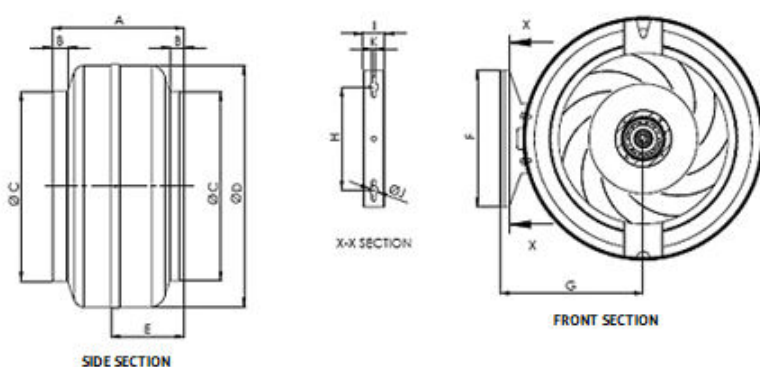
ROUND DUCT TYPE IN-LINE FAN

Y-KTF series round duct type in-line fans are the ideal fans for ducted ventilation systems which requires high flow rate and high pressure loss. Thanks to their compact construction, they can be installed directly in the air ducts without the need for large bends and transducers in any position required. Y-KTF series in-line fans are the ideal choice for high performance and trouble-free operation.

Body is manufacturing from high quality galvanized sheet. Fans are radial fans with backward curved blades. Motors are single phase and has IP55 and Class F insulation. Speed controller is optional for all models.

Usage Areas

Can be used in all kinds of ventilation systems for Industry Buildings, Offices, Residential Buildings, Shopping Malls.

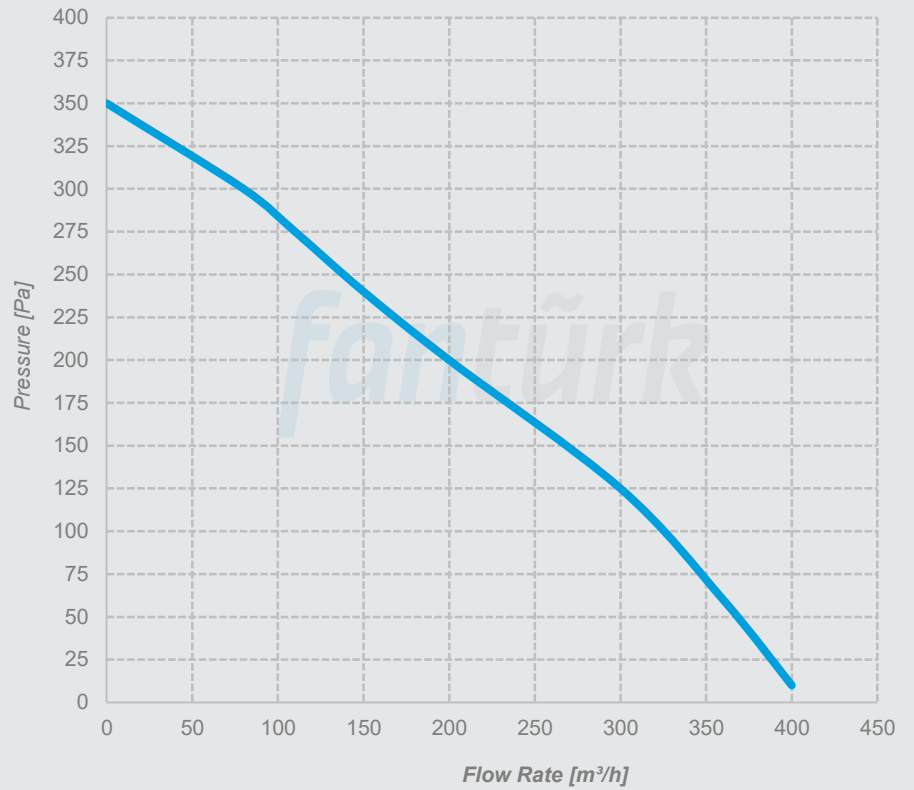


MODEL	A	B	C	D	E	F	G	H	I	J	K	VOLTAGE	FREQUENCY	POWER	CURRENT	CAPACITOR	MOTOR SPEED	AIR FLOW RATE	SOUND LEVEL	WEIGHT
	mm	mm	mm	mm	m m	m m	m m	m m	m m	m m	mm	V	Hz	W	A	µf	rpm	m ³ /h	dB A	kg
Y-KTF 100	210	26	98	233	124	225	157	170	35,5	14	6,5	230	50	68	0,28	2,5	2400	400	42	2,6
Y-KTF 125	203	26	123	233	110	225	157	170	35,5	14	6,5	230	50	76	0,29	2,5	2350	500	43	2,7
Y-KTF 150	230	30	149	322	125	225	200	170	35,5	14	6,5	230	50	110	0,47	3	2200	650	47	3,5
Y-KTF 200	228	30	199	342	130	225	210	170	35,5	14	6,5	230	50	155	0,7	5	2600	1000	52	4,25
Y-KTF 250	227	30	248	342	130	225	210	170	35,5	14	6,5	230	50	150	0,66	5	2600	1200	57	5
Y-KTF 315	220	26	311	397	122	225	238	170	35,5	14	6,5	230	50	187	0,83	6	2500	1900	68	6,1

Performance Curves

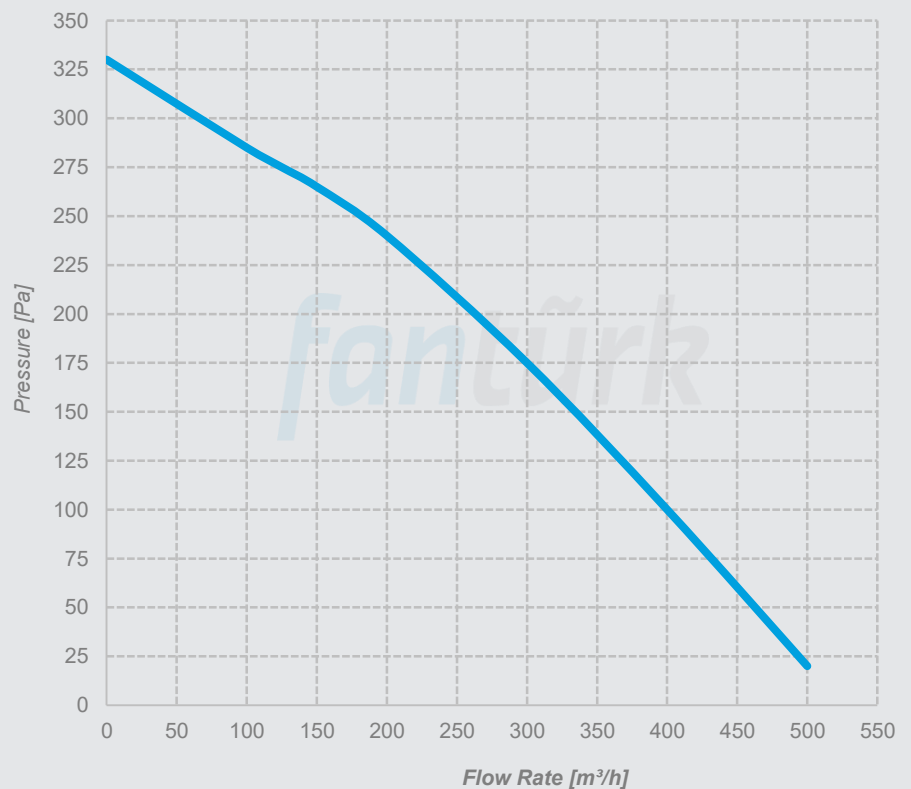
Y-KTF 100

Voltage 230 V
Frequency 50 Hz
Power 68 W
Current 0,28 A
Capaciator 2,5 μ f
Speed 2400 rpm
Air Flow Rate 400 m³/h
Sound Pressure Level 42 dBA
Weight 2,6 kg



Y-KTF 125

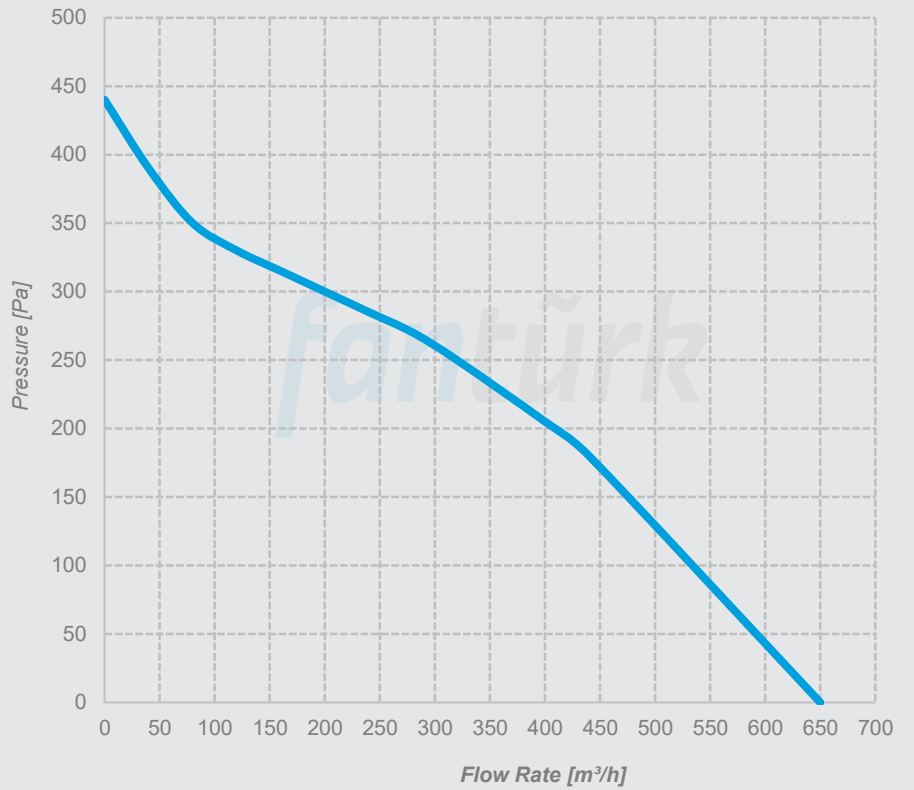
Voltage 230 V
Frequency 50 Hz
Power 76 W
Current 0,29 A
Capaciator 2,5 μ f
Speed 2325 rpm
Air Flow Rate 500 m³/h
Sound Pressure Level 43 dBA
Weight 2,7 kg



Performance Curves

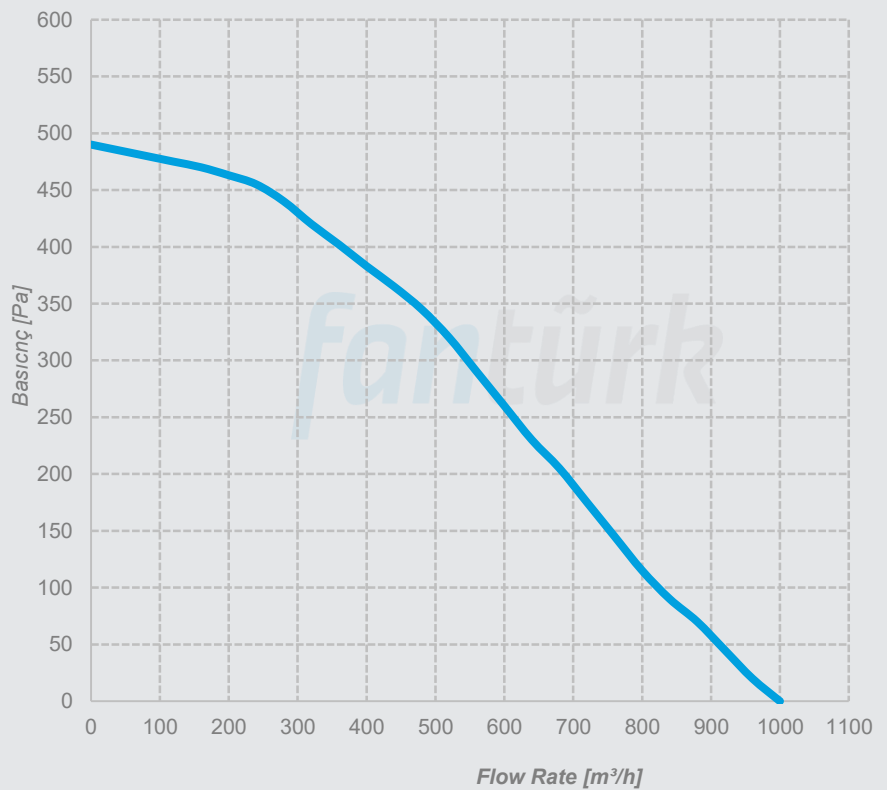
Y-KTF 150

Voltage 230 V
Frequency 50 Hz
Power 110 W
Current 0,47 A
Capaciator 3 μ f
Speed 2200 rpm
Air Flow Rate 650 m³/h
Sound Pressure Level 47 dBA
Weight 3,5 kg



Y-KTF 200

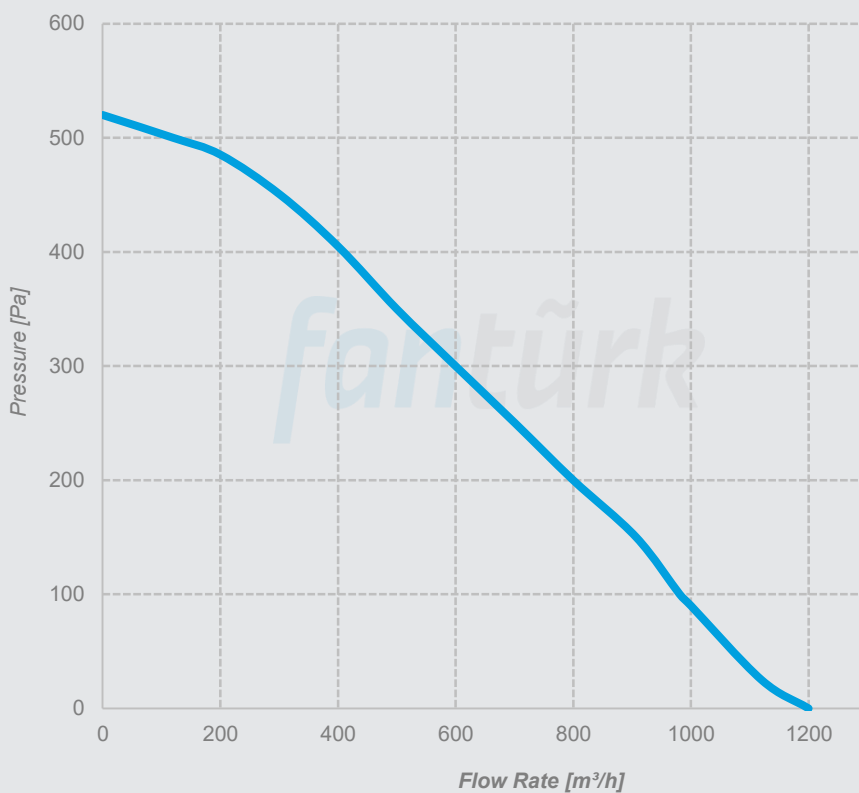
Voltage 230 V
Frequency 50 Hz
Power 155 W
Current 0,7 A
Capaciator 5 μ f
Speed 2600 rpm
Air Flow Rate 1000 m³/h
Sound Pressure Level 52 dBA
Weight 4,25 kg



Performance Curves

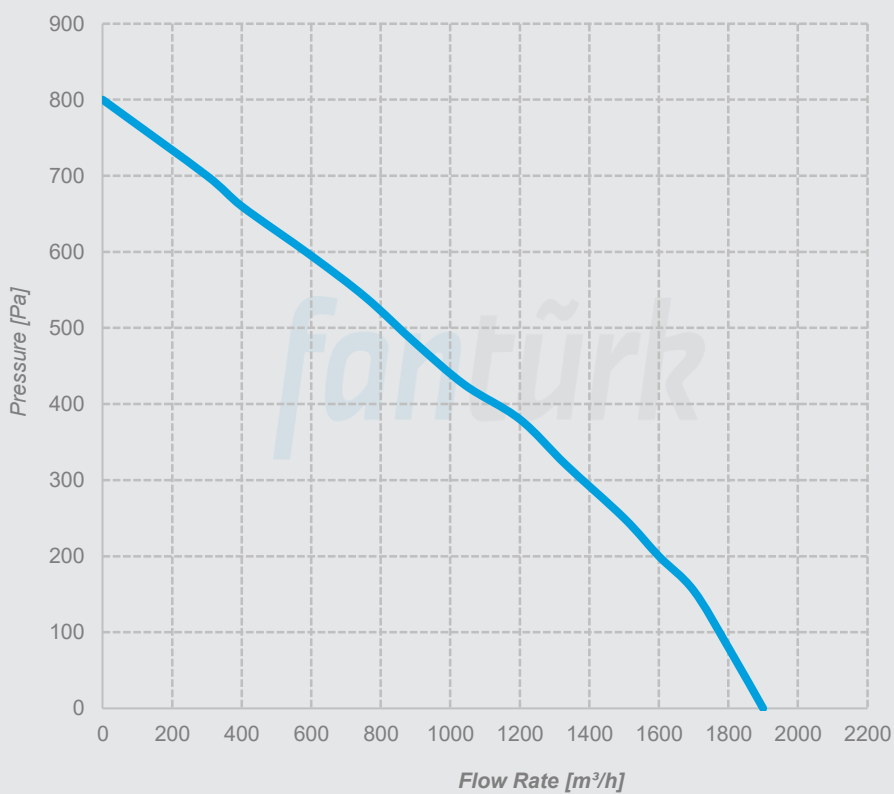
Y-KTF 250

Voltage 230 V
Frequency 50 Hz
Power 150 W
Current 0,66 A
Capaciator 5 μ f
Speed 2600 rpm
Air Flow Rate 1200 m³/h
Sound Pressure Level 57 dBA
Weight 5 kg



Y-KTF 315

Voltage 230 V
Frequency 50 Hz
Power 187 W
Current 0,83 A
Capaciator 6 μ f
Speed 2500 rpm
Air Flow Rate 1900 m³/h
Sound Pressure Level 68 dBA
Weight 6,1 kg



*Minarelicavus OSB District 202. Street No: 19 Nilüfer/Bursa Turkey
T: 90(224)482 50 95 E: info@fanturk.com.tr*

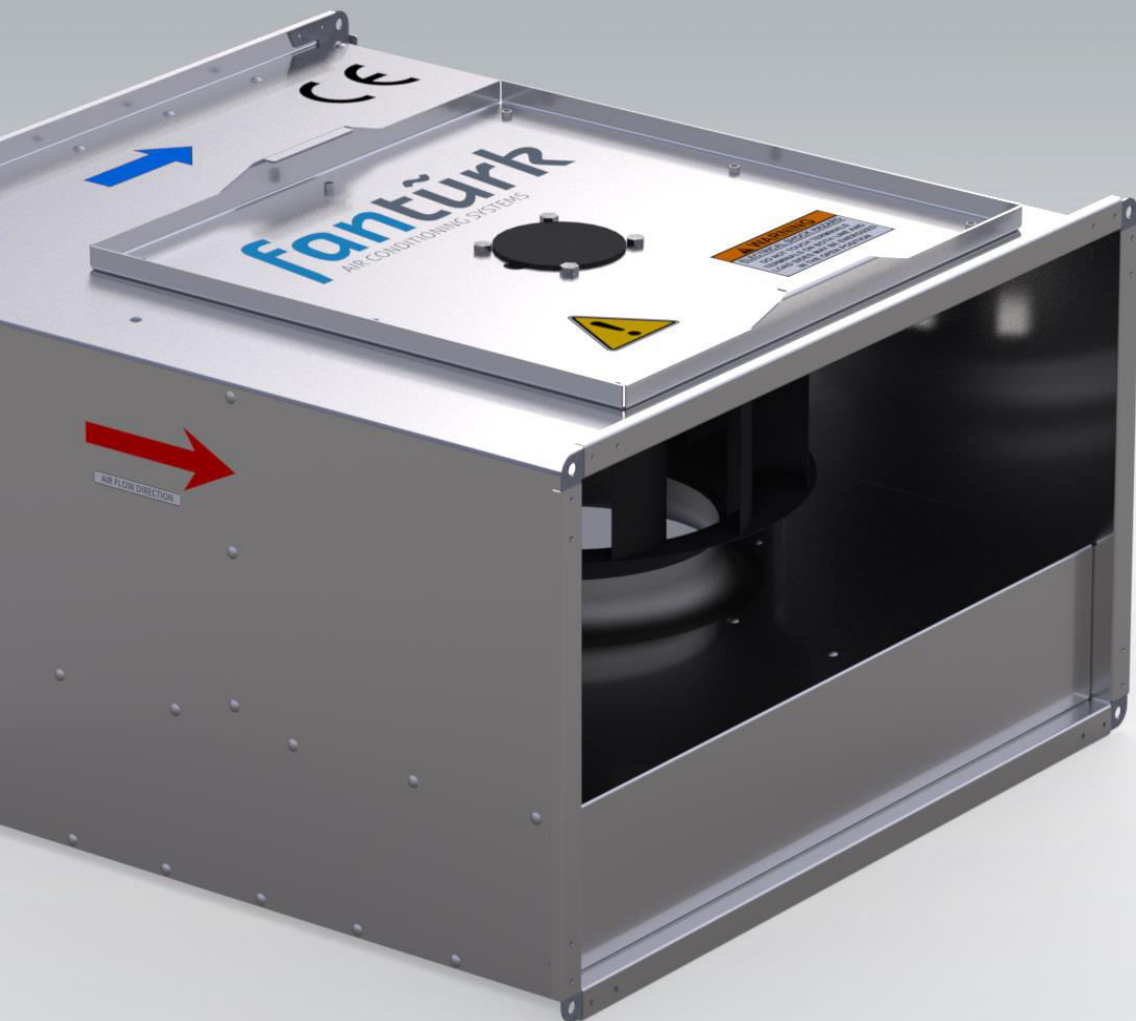
fanturk.com.tr



Product Catalogue



D-KTF
Rectangular Duct
Type In-Line Fan



Technical Specifications

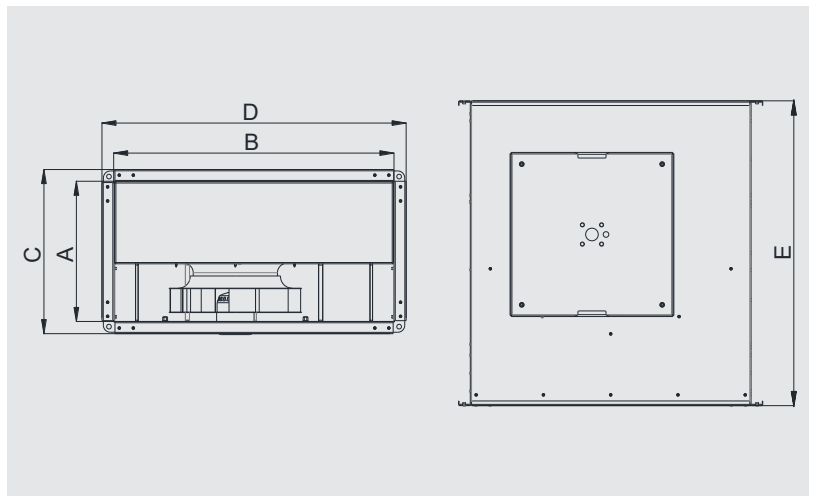
RECTANGULAR DUCT TYPE IN-LINE FAN

D-KTF series rectangular duct type radial fans; They are the ideal fans for ducted ventilation systems where high air flow and high pressure are required. Thanks to their compact construction, they can be installed directly in the air ducts without the need for large bends and transducers in any position required. D-KTF series in-line fans are the ideal choice for high performance and trouble-free operation.

Made of high quality corrosion resistant galvanized steel. Fans are radial fans with backward curved blades. Thanks to the service cover, the fan can carry out maintenance without removing the duct connection. Motors are single phase and has IP55 and Class F insulation. Speed controller is optional for all models.

Usage Areas

Can be used for ventilation systems in industrial buildings, kitchens, toilets, swimming pools, gyms, warehouses, hospitals, offices, laboratories, shopping malls, restaurants, theaters, residential buildings.

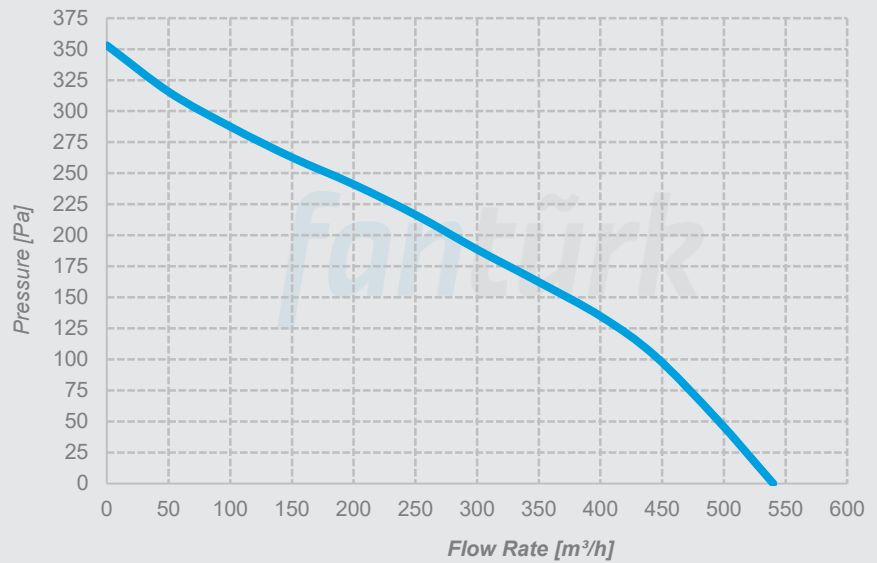


MODEL	A	B	C	D	E	VOLTAGE	FREQUENCY	POWER	CURRENT	CAPACITOR	MOTOR SPEED	AIR FLOW RATE	SOUND LEVEL	WEIGHT
	mm	mm	mm	mm	mm	V	Hz	W	A	µf	rp m	m ³ /h	dBA	kg
D-KTF 30 - 15	150	300	200	350	400	230	50	66	0,3	3	2300	540	48	7
D-KTF 40 - 20A	200	400	250	450	500	230	50	100	0,47	3	2580	800	53	11
D-KTF 40 - 20B	200	400	250	450	500	230	50	150	0,65	4	2680	1020	55	12
D-KTF 50 - 25	250	500	300	550	550	230	50	200	0,9	6	2650	1520	56	16
D-KTF 60 - 30	300	600	350	650	650	230	50	250	1,1	8	2500	1840	50	20
D-KTF 60 - 35	350	600	400	650	750	230	50	210	1	8	1400	2520	53	27
D-KTF 70 - 40	400	700	450	750	800	230	50	500	1,8	12	1380	4100	60	38
D-KTF 80 - 50	500	800	550	850	900	230	50	800	3,7	16	1350	5600	64	61
D-KTF 100 - 50	500	1000	550	1050	1050	230	50	1550	6,8	31	1380	7600	66	86

Performance Curves

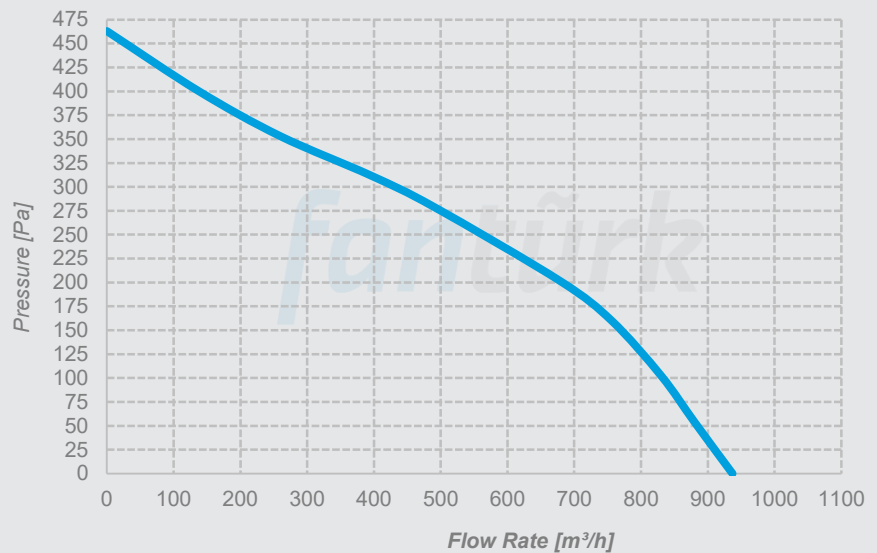
D-KTF 30 - 15

Voltage 230 V
Frequency 50 Hz
Motor Power 66 W
Current 0,3 A
Capacitor 3 μ f
Motor Speed 2300 rpm
Flow Rate 540 m³/h
Sound Pressure Level 48 dBA
Weight 7 kg



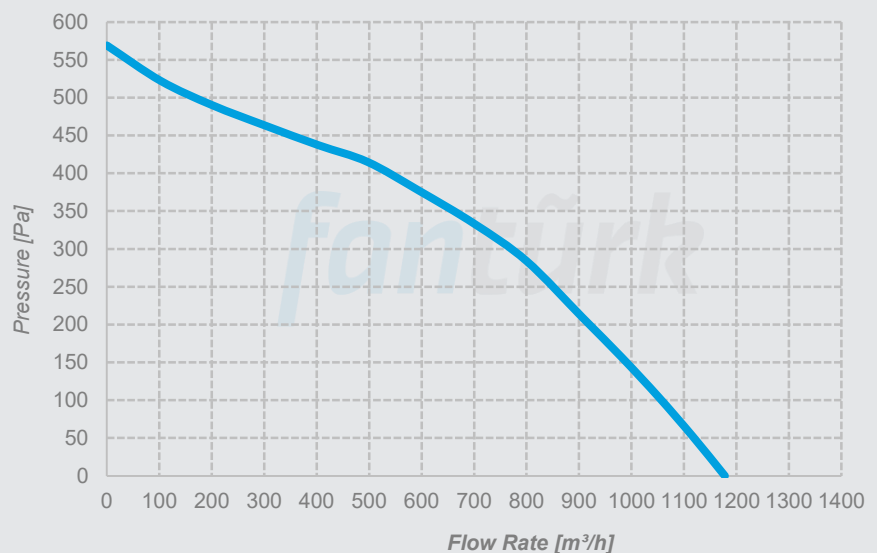
D-KTF 40 - 20A

Voltage 230 V
Frequency 50 Hz
Motor Power 100 W
Current 0,47 A
Capacitor 3 μ f
Motor Speed 2580 rpm
Flow Rate 800 m³/h
Sound Pressure Level 53 dBA
Weight 11 kg



D-KTF 40 - 20B

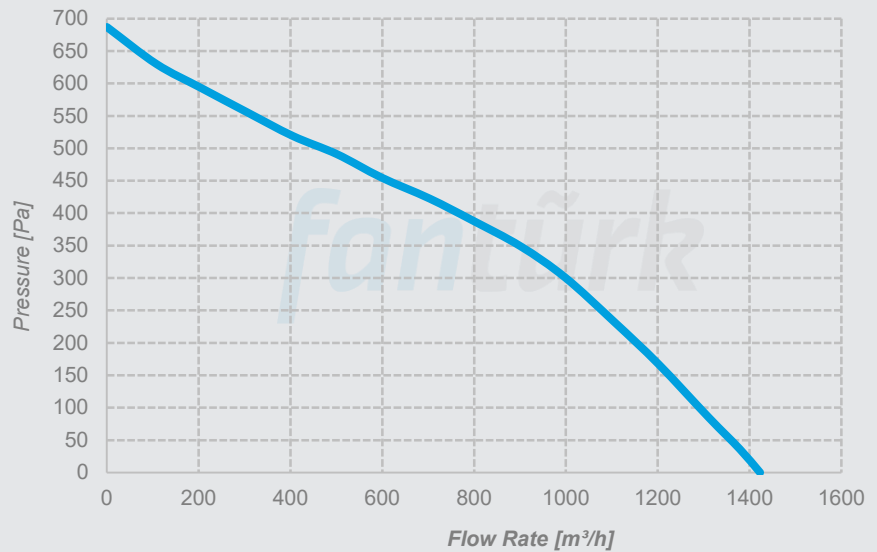
Voltage 230 V
Frequency 50 Hz
Motor Power 150 W
Current 0,65 A
Capacitor 4 μ f
Motor Speed 2680 rpm
Flow Rate 1020 m³/h
Sound Pressure Level 55 dBA
Weight 12 kg



Performance Curves

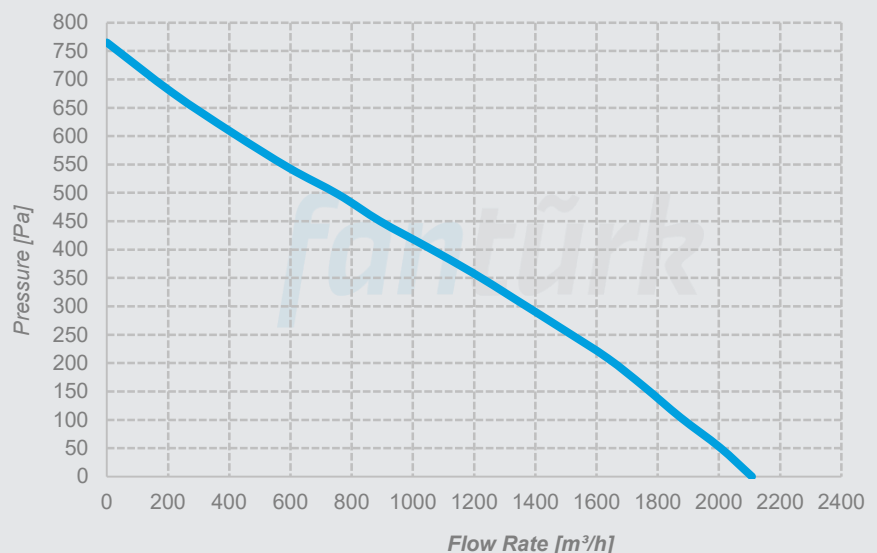
D-KTF 50 - 25

Voltage 230 V
Frequency 50 Hz
Motor Power 200 W
Current 0,9 A
Capacitor 6 μ f
Motor Speed 2650 rpm
Flow Rate 1520 m³/h
Sound Pressure Level 56 dBA
Weight 16 kg



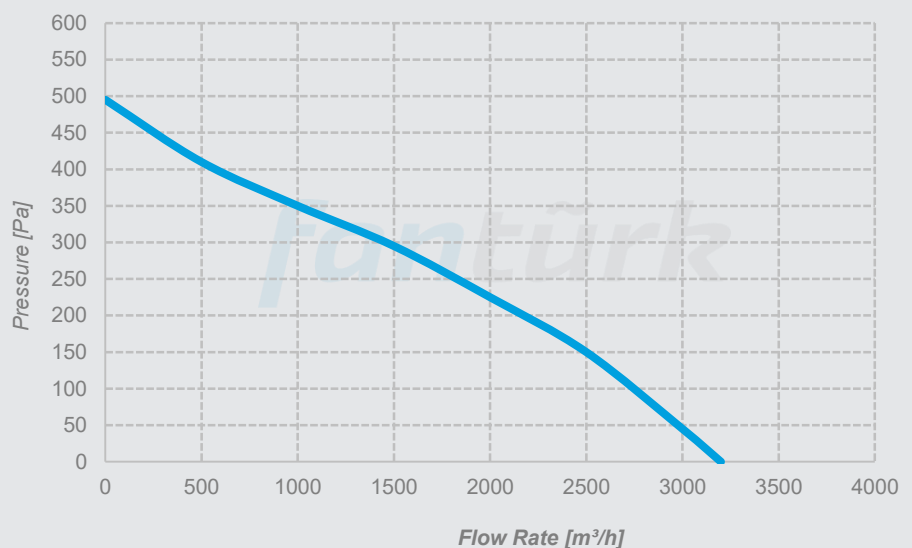
D-KTF 60 - 30

Voltage 230 V
Frequency 50 Hz
Motor Power 250 W
Current 1,1 A
Capacitor 8 μ f
Motor Speed 2500 rpm
Flow Rate 1840 m³/h
Sound Pressure Level 50 dBA
Weight 20 kg



D-KTF 60 - 35

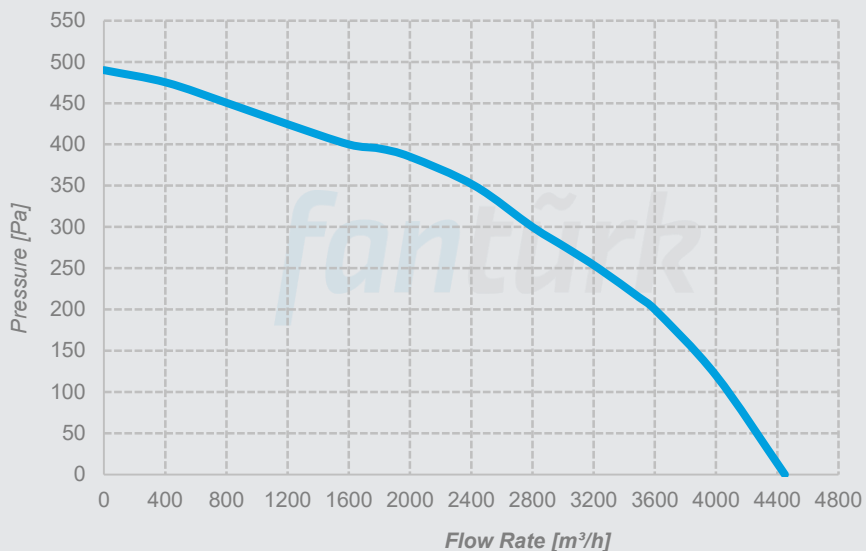
Voltage 230 V
Frequency 50 Hz
Motor Power 210 W
Current 1 A
Capacitor 8 μ f
Motor Speed 1400 rpm
Flow Rate 2520 m³/h
Sound Pressure Level 53 dBA
Weight 27 kg



Performance Curves

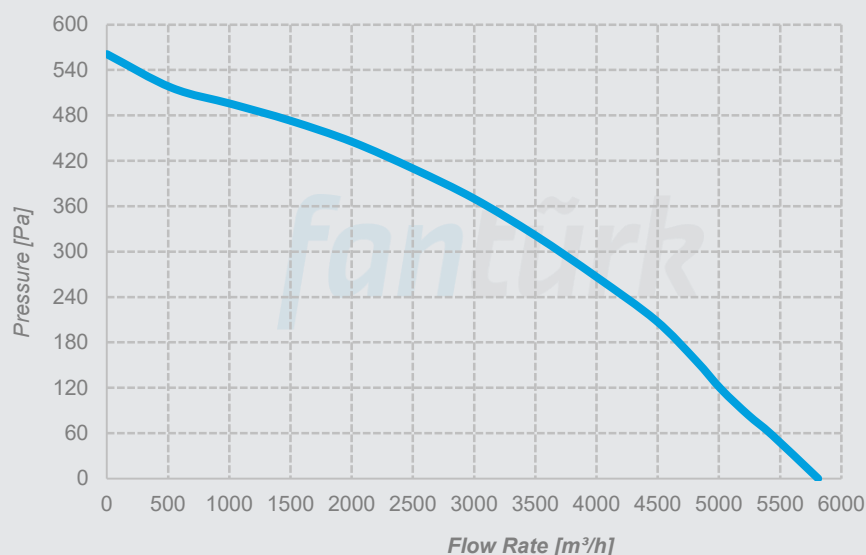
D-KTF 70 - 40

Voltage 230 V
Frequency 50 Hz
Motor Power 500 W
Current 1,8 A
Capacitor 12 μ f
Motor Speed 1380 rpm
Flow Rate 4100 m³/h
Sound Pressure Level 60 dBA
Weight 38 kg



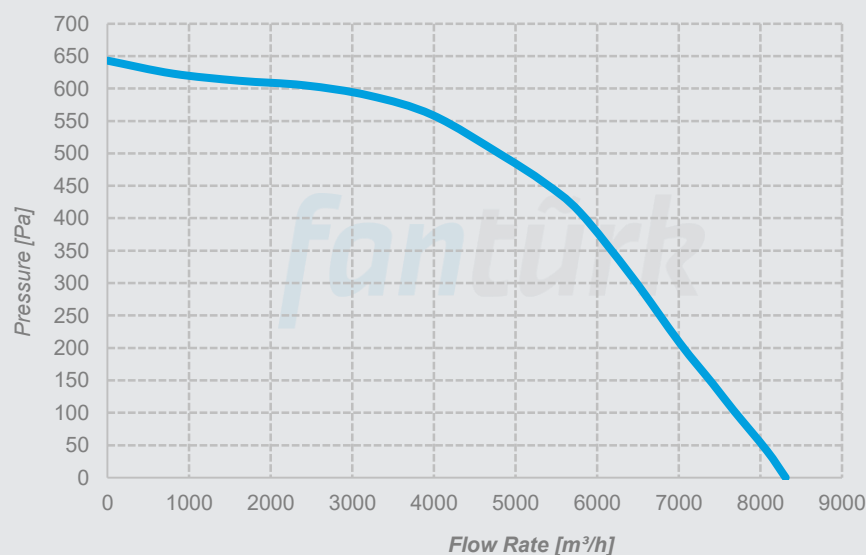
D-KTF 80 - 50

Voltage 230 V
Frequency 50 Hz
Motor Power 800 W
Current 3,7 A
Capacitor 16 μ f
Motor Speed 1350 rpm
Flow Rate 5600 m³/h
Sound Pressure Level 64 dBA
Weight 61 kg



D-KTF 100 - 50

Voltage 230/380 V
Frequency 50 Hz
Motor Power 1550W
Current 6,8 A
Capacitor 31 μ f
Motor Speed 1380rpm
Flow Rate 7600 m³/h
Sound Pressure Level 66 dBA
Weight 86 kg



*Minarelicavus OSB District 202. Street No: 19 Nilüfer/Bursa Turkey
T: 90(224)482 50 95 E: info@fanturk.com.tr*

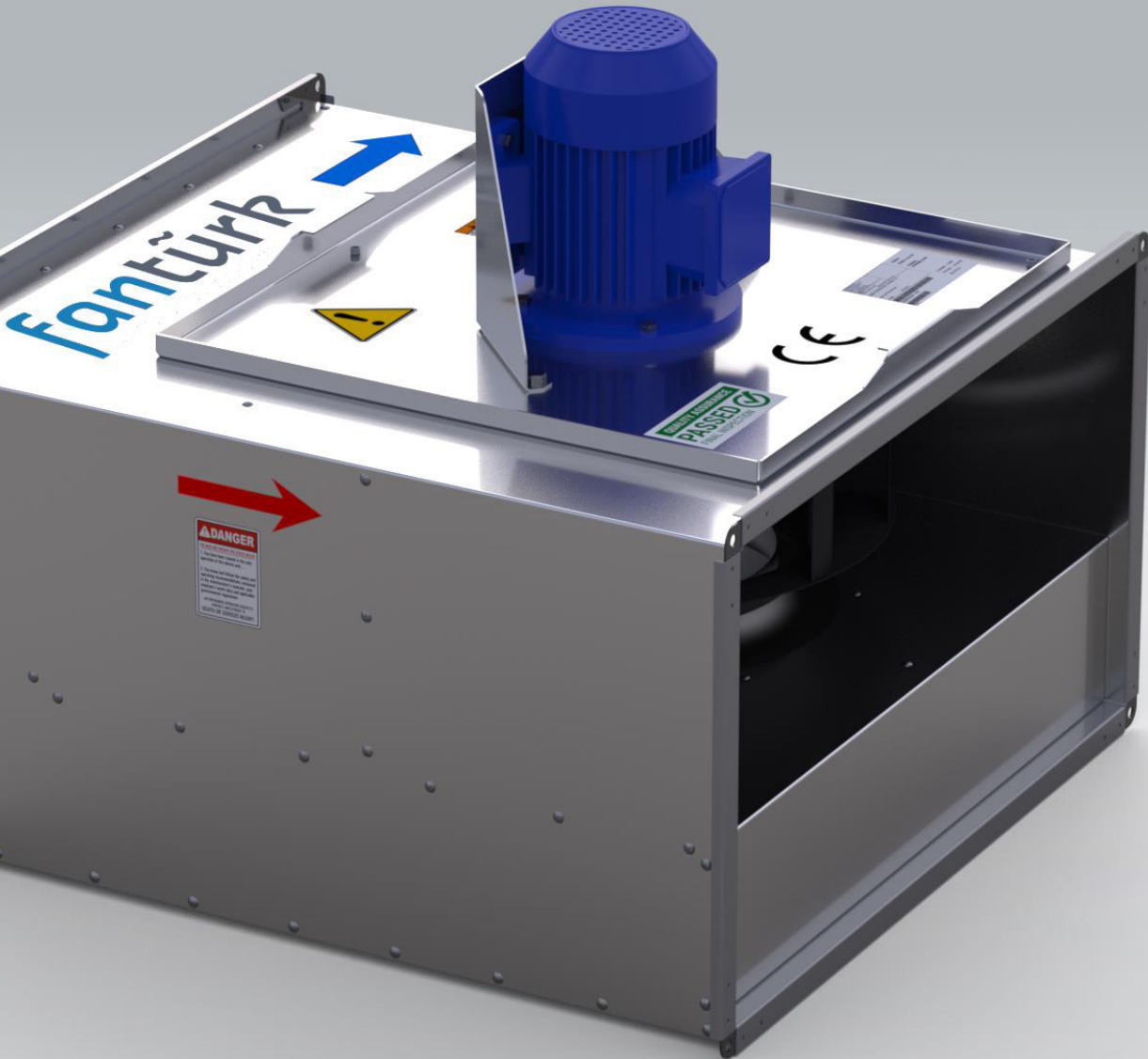
fanturk.com.tr



Product Catalogue



D-KTF
External Driven
Rectangular Duct
Type In-Line Fan



Technical Specifications

EXTERNAL DRIVEN RECTANGULAR DUCT TYPE IN-LINE FAN

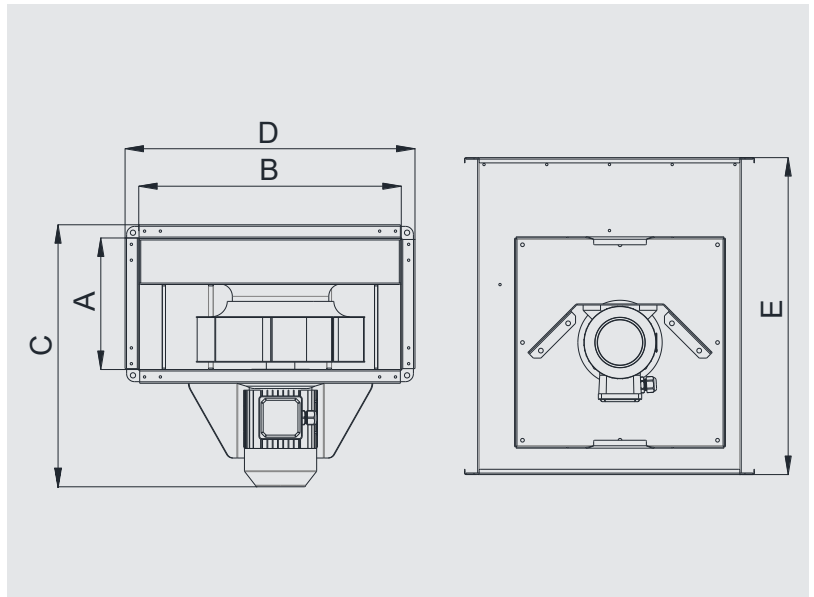
D-KTF series rectangular duct type radial fans; They are the ideal fans for ducted ventilation systems where high air flow and high pressure are required. Thanks to their compact construction, they can be installed directly in the air ducts without the need for large bends and transducers in any position required. D-KTF series in-line fans are the ideal choice for high performance and trouble-free operation.

Made of high quality corrosion resistant galvanized steel. Fans are radial fans with backward curved blades. Motors can be single or three phase and has IP55 and Class F insulation. Due to the fact that the motor is out of the air flow, it is protected from the factors that will damage the motor or hot air. This method provides 120 ° C continuous operation. Speed controller is optional for all models.

Can be manufactured with Ex-Proof feature if requested.

Usage Areas

Can be used in all kinds of industrial, office, kitchen, hotel, residential and parking ventilation systems where the fluid is hot or corrosive.

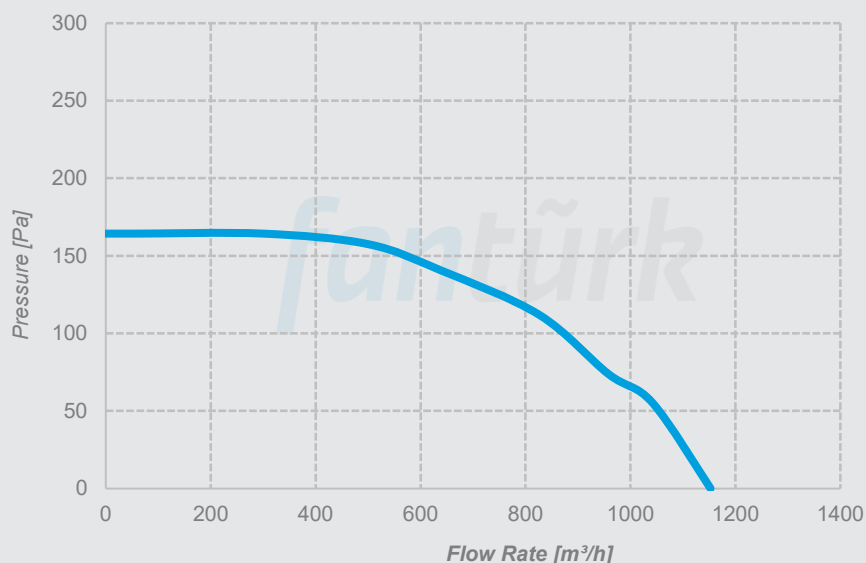


MODEL	A	B	C	D	E	VOLTAGE	FREQUENCY	POWER	CURRENT	MOTOR SPEED	AIR FLOW RATE	SOUND LEVEL	WEIGHT
	mm	mm	mm	mm	mm	V	Hz	kW	A	rpm	m ³ /h	dBA	kg
D-KTF 280	250	500	469	550	650	380	50	0,18	0,6	1340	1150	48	28
D-KTF 315	250	500	495	550	600	380	50	0,25	0,8	1380	2000	53	32
D-KTF 355	300	600	545	650	750	380	50	0,37	1,2	1390	2500	55	34
D-KTF 400	400	700	665	750	800	380	50	0,55	1,6	1385	3500	56	38
D-KTF 450	400	700	665	750	800	380	50	0,75	2	1370	5000	58	49
D-KTF 500	500	800	765	850	900	380	50	1,1	2,6	1380	7000	61	63
D-KTF 560	500	1000	790	1050	1050	380	50	1,5	3,5	1385	9800	64	74

Performance Curves

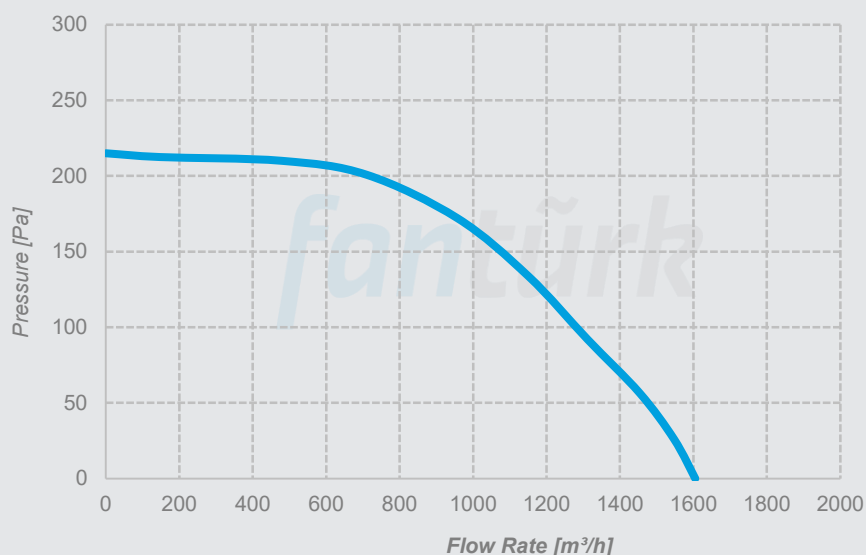
D-KTF 280

Voltage 380 V
Frequency 50 Hz
Motor Power 0,18 kW
Motor Speed 1340 rpm
Sound Pressure Level 48 dBA
Weight 28 kg



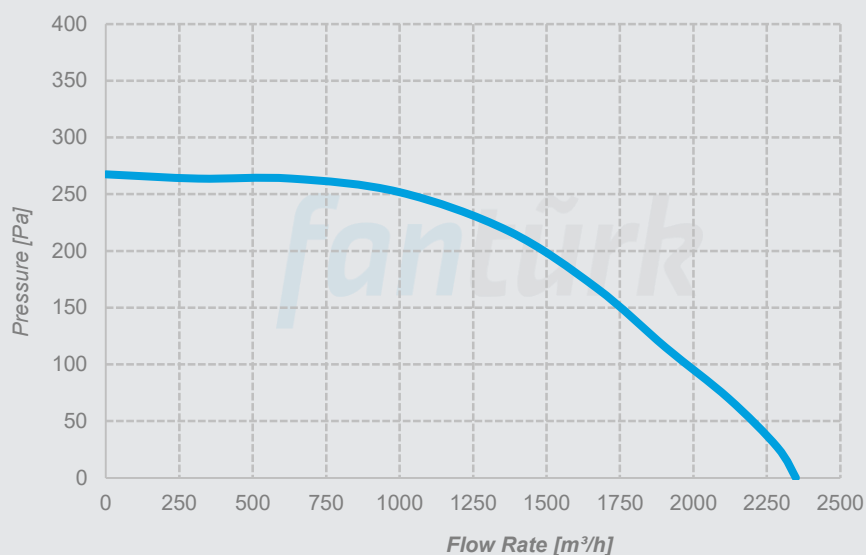
D-KTF 315

Voltage 380 V
Frequency 50 Hz
Motor Power 0,25 kW
Motor Speed 1380 rpm
Sound Pressure Level 53 dBA
Weight 32 kg



D-KTF 355

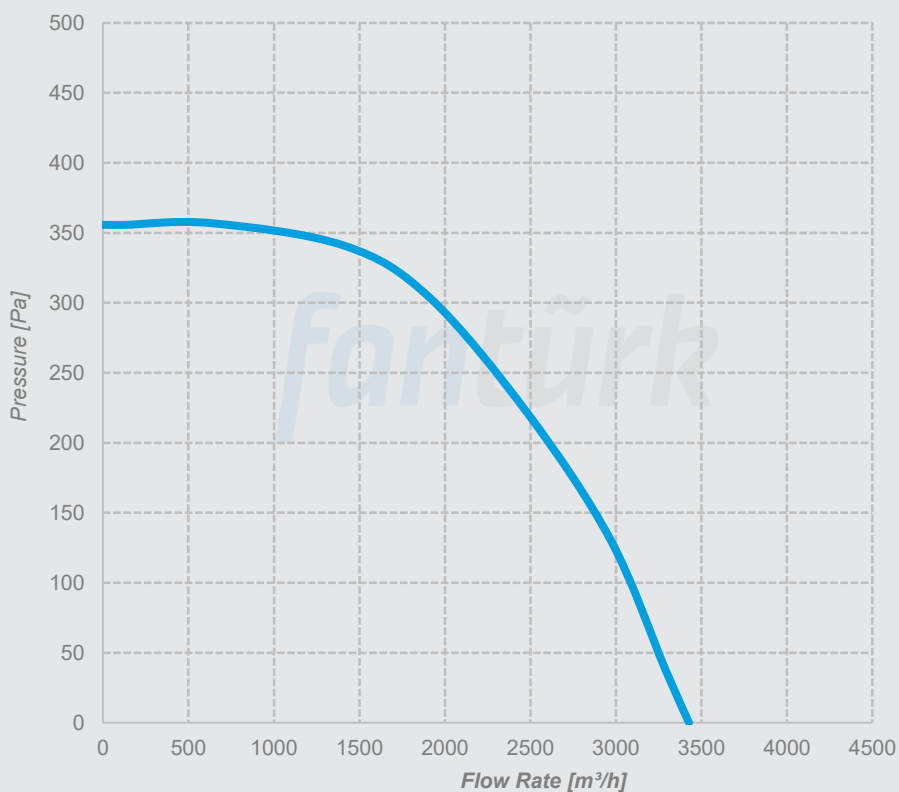
Voltage 380 V
Frequency 50 Hz
Motor Power 0,37 kW
Motor Speed 1390 rpm
Sound Pressure Level 55 dBA
Weight 34 kg



Performance Curves

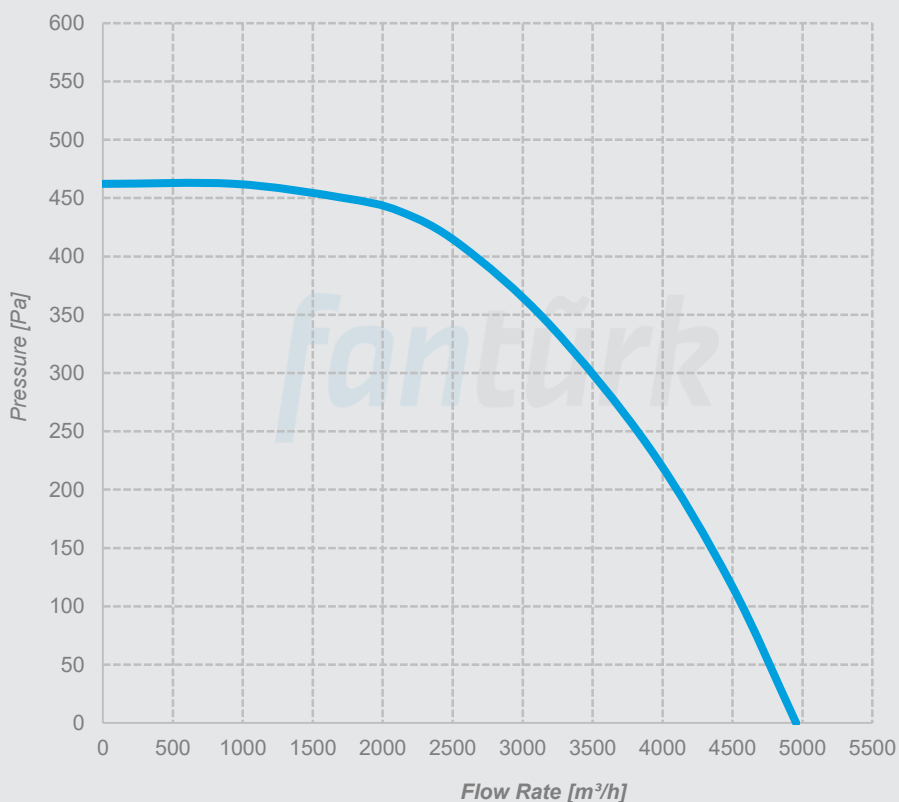
D-KTF 400

Voltage 380 V
Frequency 50 Hz
Motor Power 0,55 kW
Motor Speed 1340 rpm
Sound Pressure Level 56 dBA
Weight 38 kg



D-KTF 450

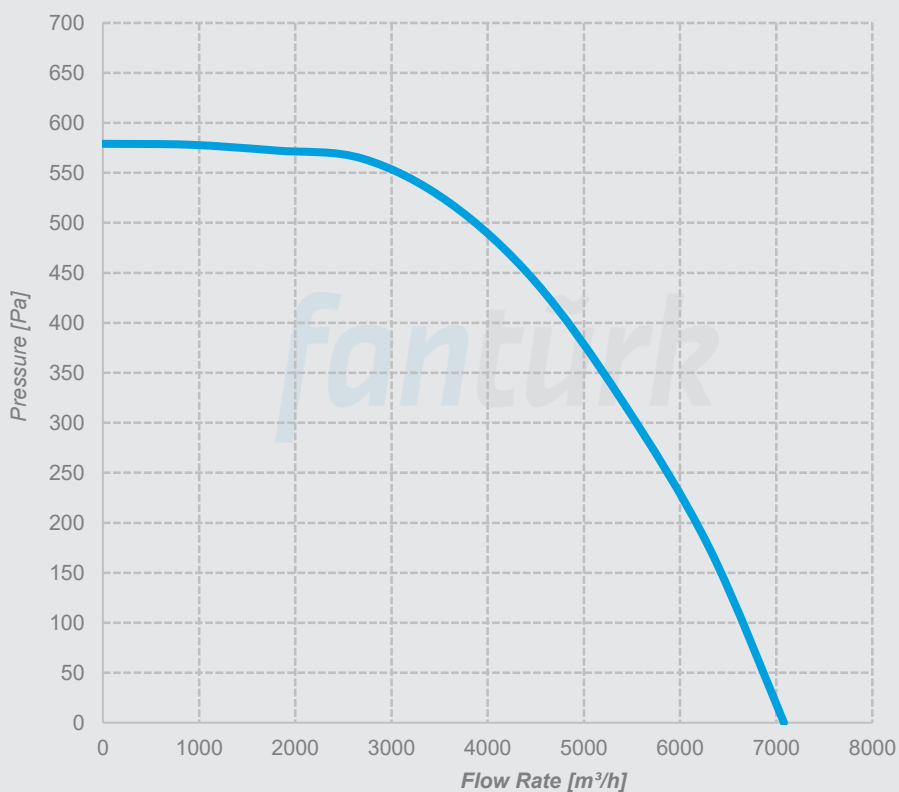
Voltage 380 V
Frequency 50 Hz
Motor Power 0,75 kW
Motor Speed 1370 rpm
Sound Pressure Level 58 dBA
Weight 49 kg



Performance Curves

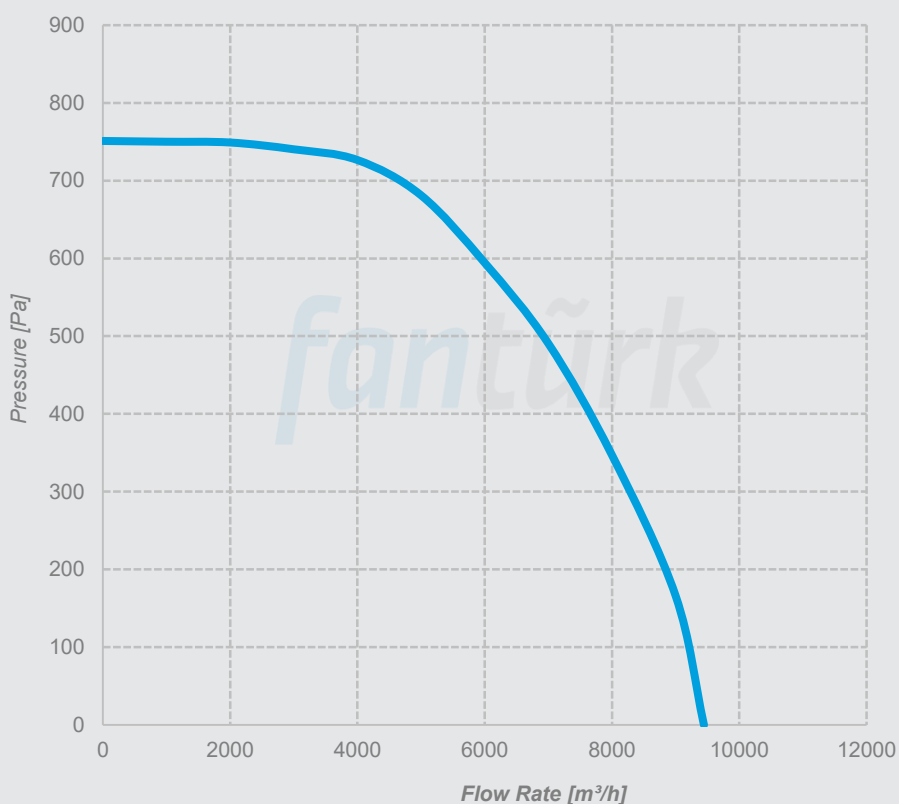
D-KTF 500

Voltage 380 V
Frequency 50 Hz
Motor Power 1,1 kW
Motor Speed 1380 rpm
Sound Pressure Level 61 dBA
Weight 63 kg



D-KTF 560

Voltage 380 V
Frequency 50 Hz
Motor Power 1,5 kW
Motor Speed 1385 rpm
Sound Pressure Level 64 dBA
Weight 74 kg



*Minarelicavus OSB District 202. Street No: 19 Nilüfer/Bursa Turkey
T: 90(224)482 50 95 E: info@fanturk.com.tr*

fanturk.com.tr



Product Catalogue



SHS Duct Type Shelter Ventilation Unit



Shelter Ventilation Regulation

Regardless of the type of shelter, mechanical ventilation is mandatory. During protection times the in-take air to the shelter passes three step filtration which are G4 Filter, Activated Carbon Filter and Nuclear Hepa Filter. In peacetime, the in-take air only passes through G4 filter and fed into the shelter. Air flow rate required for one person during protection times is mentioned in the table below. The following capacity values are minimum values and any additional measures to improve air quality can be used in the design.

Duct design, layout and number of vents are arranged by the mechanical installation project designer. This arrangement has to made in accordance with TS 3419 "Ventilation and Air Conditioning Facilities-Design Rules" and TS 3420 "Ventilation and Air Conditioning Facilities Installation Rules" standarts.

SHELTER CAPACITY	REQUIRED AIR FLOW (Protection Times)	HIGH FIRE HAZARD	LOW AND MEDIUM FIRE HAZARD
Up to 0-50 people	1.8 m ³ /h-person	Sand filter, G4 dust filter, activated carbon filter	G4 dust filter, radioactive filter and activated carbon filter
Between 51-150 people	3 m ³ /h-person	Sand filter, G4 dust filter, activated carbon filter	G4 dust filter, radioactive filter and activated carbon filter
More than 150 people	4.5 m ³ /h-person	Sand filter, G4 dust filter, activated carbon filter	G4 dust filter, radioactive filter and activated carbon filter

3194 - Zoning Law - Shelter Regulation Principles - Ventilation Calculation Table

Sample Calculation;

Total Construction Area: $A = 3000 \text{ m}^2$

Number of people in the shelter: $N = A / 2 = 3000/20 = 150$

Normal and protected air flow requirement per person: $Q = 3 \text{ m}^3 / \text{h-person}$

Total air flow requirement: $V = Q \times N, V = 150 \text{ people} \times 3 \text{ m}^3 / \text{h-person} = 450 \text{ m}^3 / \text{h}$

General Features;

- Radioactive Nuclear Filter
- Activated Carbon Filter
- G4 Filter
- Backward Curved Plug Radial Fan
- High Efficiency & Low Noise
- By-Pass Damper
- Duct Type
- Ergonomic Mounting
- In accordance with the Manufacturing Regulation

Optional Features;

- Lead Coating
- Lead Separator

PLUG FAN

- Backward Curved Blades
- High efficiency
- Low power consumption
- Low noise level
- High static pressure
- Thermo protection element against overheating of the motor
- Easy to remove and service thanks to the service cover.



NUCLEAR HEPA FILTER

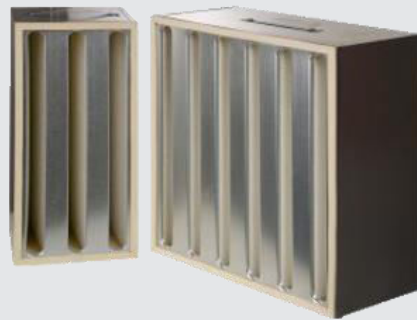
Media: High quality glass fiber H13 (EN1822)

Frame Materials: Galvanized
Flammability Class: K2 / F2 (K1 / F1 available)

Max. Continuous Operating Temperature: 120°C

Design: V-Module

Gasket: Silicone



G4 FILTER

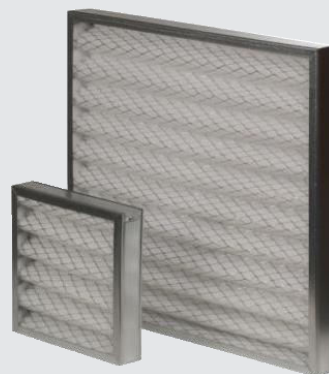
Media: High quality glass fiber H13 (EN1822)

Frame Materials: Galvanized
Flammability Class: K2 / F2 (K1 / F1 available)

Max. Continuous Operating Temperature: 120°C

Design: V-Module

Gasket: Silicone



ACTIVATED CARBON FILTER

Media: Active carbon impregnated synthetic fiber

Media Weight: 400 g

Frame Type: Galvanized

Max. Continuous Operating Temperature: 75°C

Flammability Class: K2 / F2 at normal temperature



Technical Specifications

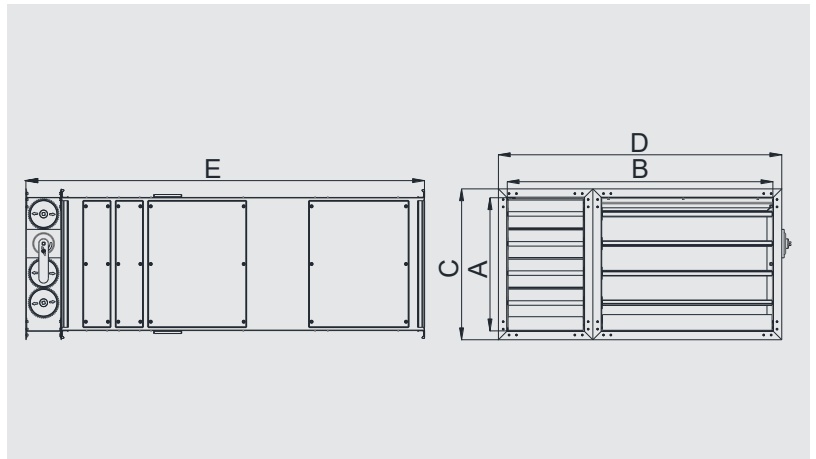
DUCT TYPE SHELTER VENTILATION UNIT WITH FILTERS

SHS series shelter ventilation units are the most ideal devices for shelter ventilation systems. Thanks to their compact construction, they can be installed directly in air ducts, without the need for large bends and transducers.

The body is made of high quality corrosion-resistant galvanized steel. The fans are radial fans with backward curved blades. Thanks to the service cover, the fan and filters can be carry out maintenance without removing the duct connection. Depending on the project, lead coating or lead separator may be added.

Usage Areas

Can be used in shelter ventilation systems for all kinds of offices, residences, hospitals and residential buildings.

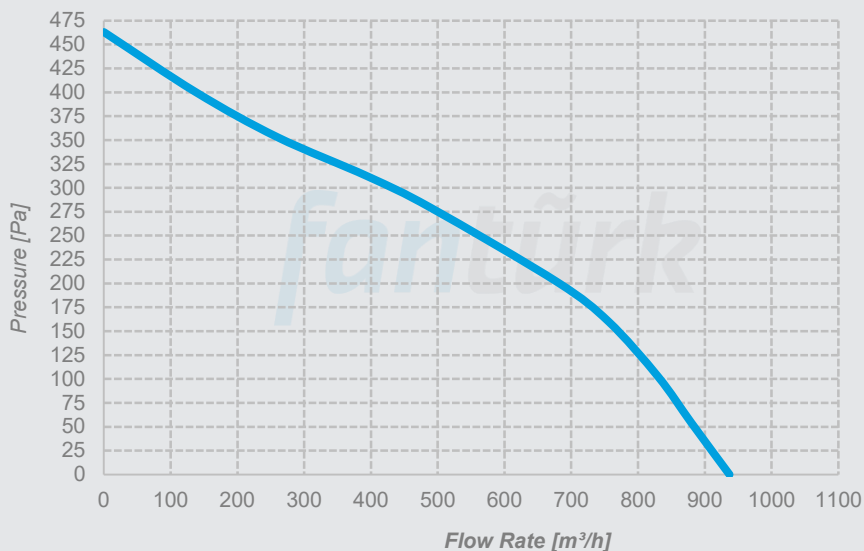


MODEL	A	B	C	D	E	FLOW RATE	VOLTAGE	FREQUENCY	MOTOR POWER	CURRENT	CAPACITOR	MOTOR SPEED	SOUND PRESSURE LEVEL	WEIGHT
	mm	mm	mm	mm	mm	m ³ /h	V	Hz	W	A	µF	rpm	dBa	kg
SHS-1	300	400	370	460	1250	600	230	50	100	0,47	3	2580	53	25
SHS-2	350	500	410	560	1250	850	230	50	150	0,65	4	2680	55	30
SHS-3	350	500	410	560	1250	1150	230	50	200	0,9	6	2650	56	30
SHS-4	350	900	410	960	1250	1500	230	50	250	1,1	8	2500	50	45
SHS-5	450	900	510	960	1350	1800	230	50	210	1	8	1400	53	66
SHS-6	650	900	710	960	1350	3000	230	50	500	1,8	12	1380	60	91
SHS-7	650	900	710	960	1350	3600	230	50	500	1,8	12	1380	60	91
SHS-8	650	900	710	960	1350	4350	230	50	800	3,7	16	1350	64	91
SHS-9	650	1300	710	1360	1520	7600	230	50	1550	6,8	31	1380	66	136

Performance Curves

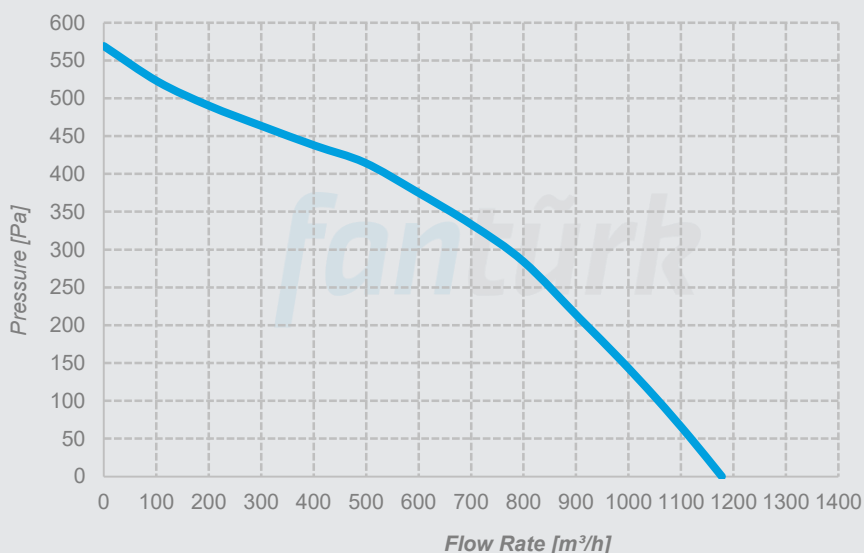
SHS-1

Voltage 230 V
Frequency 50 Hz
Motor Power 100 W
Current 0,47 A
Capacitor 3 μ f
Motor Speed 2580 rpm
Flow Rate 600 m³/h
Sound Pressure Level 53 dBA
Weight 25 kg



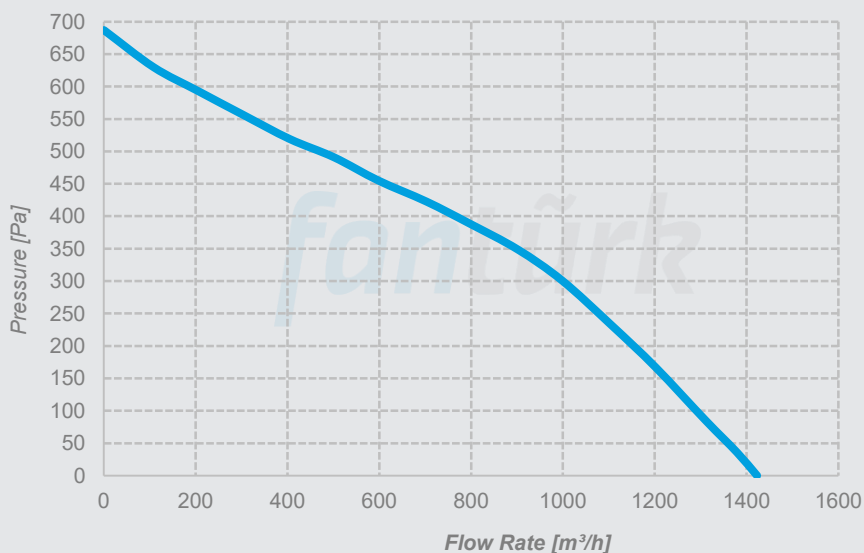
SHS-2

Voltage 230 V
Frequency 50 Hz
Motor Power 150 W
Current 0,65 A
Capacitor 4 μ f
Motor Speed 2680 rpm
Flow Rate 850 m³/h
Sound Pressure Level 55 dBA
Weight 30 kg



SHS-3

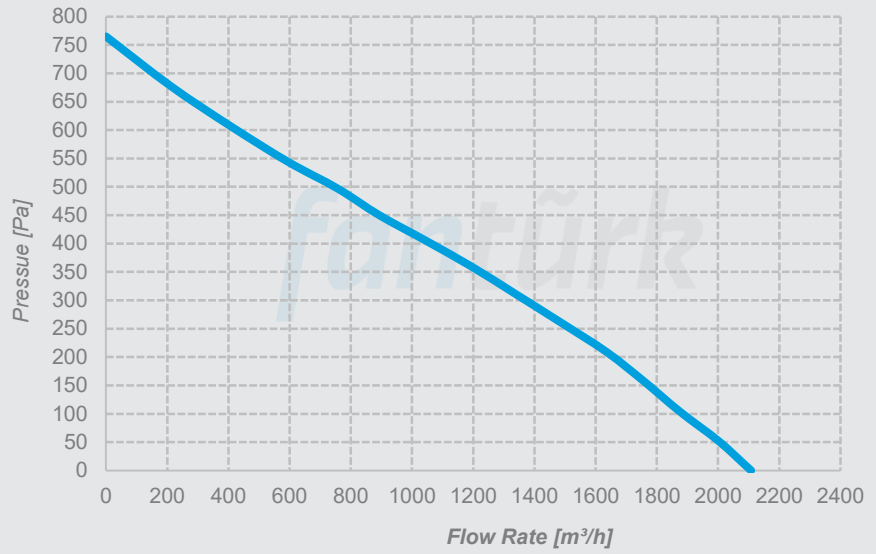
Voltage 230 V
Frequency 50 Hz
Motor Power 200 W
Current 0,9 A
Capacitor 6 μ f
Motor Speed 2650 rpm
Flow Rate 1150 m³/h
Sound Pressure Level 56 dBA
Weight 30 kg



Performance Curves

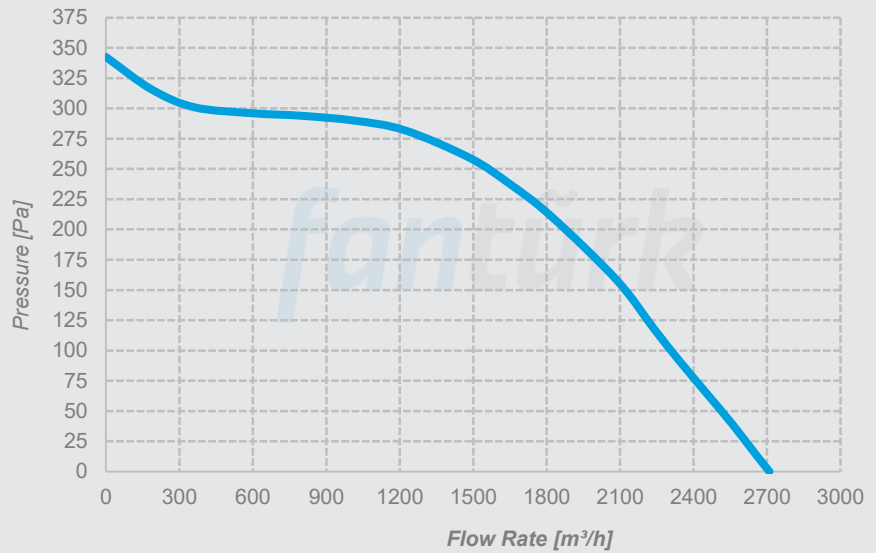
SHS-4

Voltage 230 V
Frequency 50 Hz
Motor Power 250 W
Current 1,1 A
Capacitor 8 μ f
Motor Speed 2500 rpm
Flow Rate 1500 m³/h
Sound Pressure Level 50 dBA
Weight 45 kg



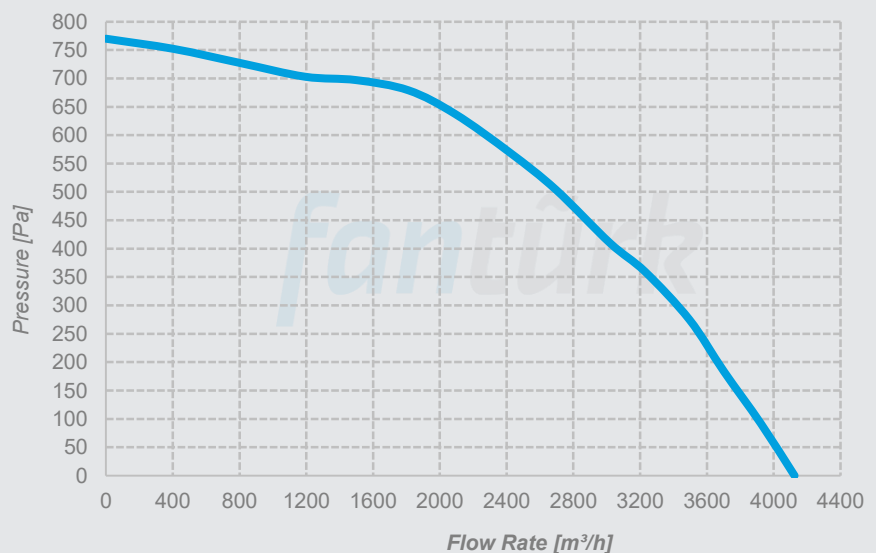
SHS-5

Voltage 230 V
Frequency 50 Hz
Motor Power 210 W
Current 1 A
Capacitor 8 μ f
Motor Speed 1400 rpm
Flow Rate 1800 m³/h
Sound Pressure Level 53 dBA
Weight 66 kg



SHS-6

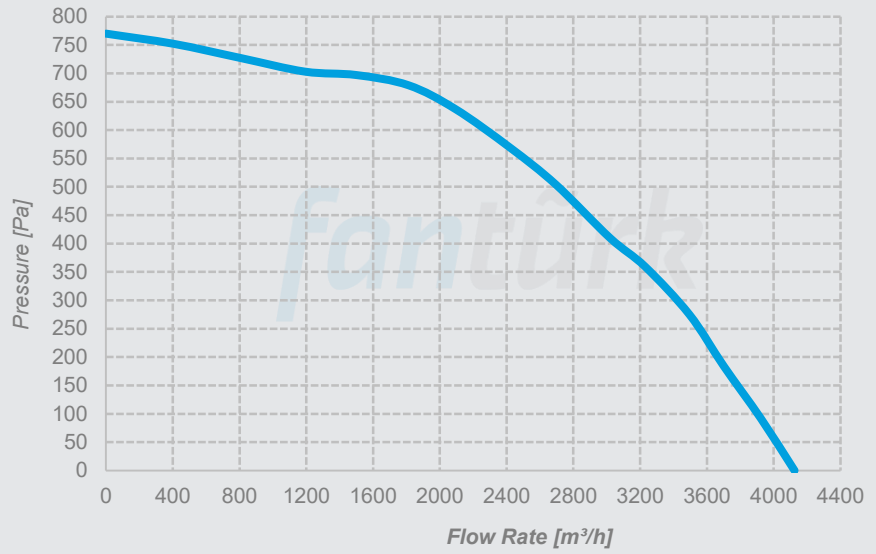
Voltage 230 V
Frequency 50 Hz
Motor Power 500 W
Current 1,8 A
Capacitor 12 μ f
Motor Speed 1380 rpm
Flow Rate 3000 m³/h
Sound Pressure Level 60 dBA
Weight 91 kg



Performance Curves

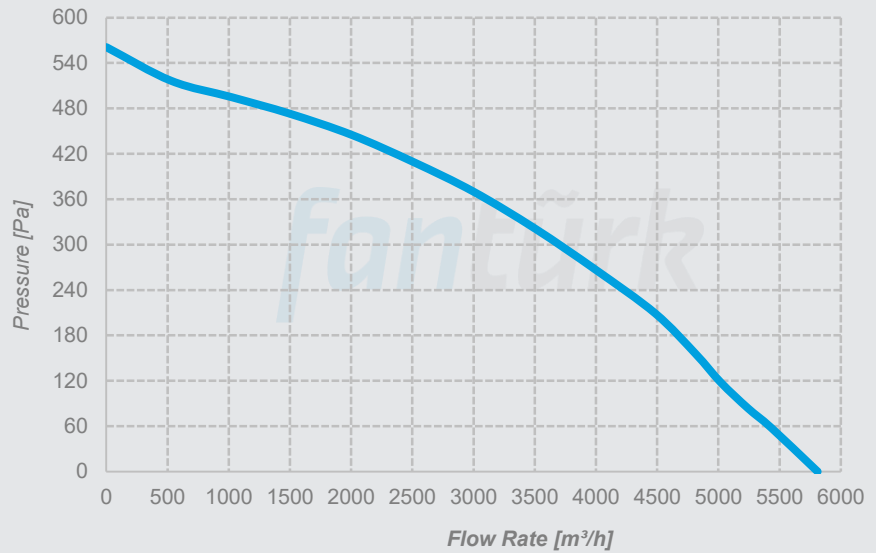
SHS-7

Voltage 230 V
Frequency 50 Hz
Motor Power 500 W
Current 1,8 A
Capacitor 12 μ f
Motor Speed 1380 rpm
Flow Rate 3600 m³/h
Sound Pressure Level 60 dBA
Weight 91 kg



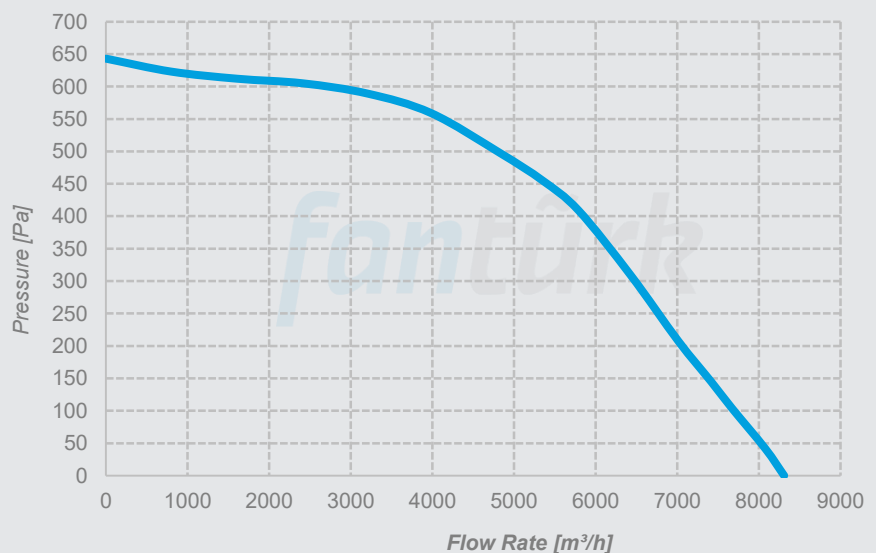
SHS-8

Voltage 230 V
Frequency 50 Hz
Motor Power 800 W
Current 3,7 A
Capacitor 16 μ f
Motor Speed 1350 rpm
Flow Rate 4350 m³/h
Sound Pressure Level 64 dBA
Weight 91 kg



SHS-9

Voltage 230 V
Frequency 50 Hz
Motor Power 1550 W
Current 6,8 A
Capacitor 31 μ f
Motor Speed 1380 rpm
Flow Rate 7600 m³/h
Sound Pressure Level 66 dBA
Weight 136 kg



*Minarelicavus OSB District 202. Street No: 19 Nilüfer/Bursa Turkey
T: 90(224)482 50 95 E: info@fanturk.com.tr*

fanturk.com.tr